

Sunday

Monday

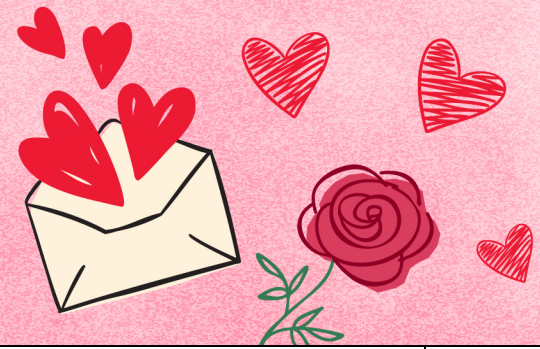
Tuesday

Wednesday

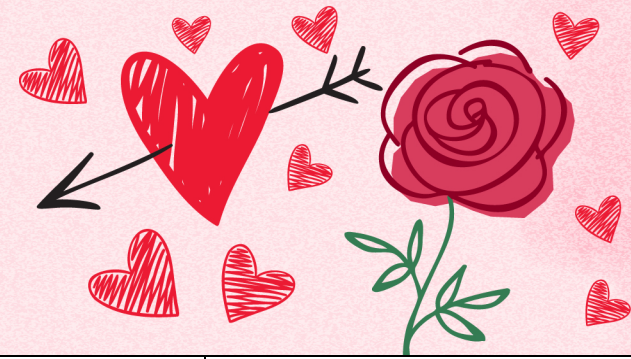
Thursday

Friday

Saturday



February 2025



	<h1>February 2025</h1>						<p style="text-align: right;">1</p> <p>*10 a.m. Cribbage *2 p.m. SORRY!</p>
<p>2</p> <p>*10 a.m. Dominoes *2 p.m. Bean Bag Toss</p> <p style="text-align: right;">Groundhog Day</p>	<p>3</p> <p>9:30 a.m. Chair Exercises 9:50 a.m. Corn Hole 10:30 a.m. Memory Care 11 a.m. Baking Club 2 p.m. Balloon Volleyball 3 p.m. Coffee Social</p>	<p>4</p> <p>9:30 a.m. Chair Exercises 9:50 a.m. Parachute 10:30 a.m. Memory Care 2 p.m. Bingo! 3 p.m. Coffee Social</p>	<p>5</p> <p>9:30 a.m. Chair Exercises 9:50 a.m. Horseshoes 10:30 a.m. Memory Care 1 p.m. Nails with Michele 2:30 p.m. Hangman 3 p.m. Coffee Social</p>	<p>6</p> <p>9:30 a.m. Chair Exercises 9:50 a.m. Balloon Volleyball 10:30 a.m. Memory Care 2 p.m. Fairmont Methodist Church Service 3 p.m. Bingo!</p>	<p>7</p> <p>9:30 a.m. Chair Exercises 9:50 a.m. Broom Ball 10:30 a.m. Memory Care 2 p.m. Celtus Goblirsch Band 3 p.m. Coffee Social</p>	<p style="text-align: right;">8</p> <p>*10 a.m. Connect Four *2 p.m. Farkle</p>	
<p>9</p> <p>*10 a.m. Puzzles *2 p.m. Balloon Volleyball</p>	<p>10</p> <p>9:30 a.m. Chair Exercises 9:50 a.m. Coloring 10:30 a.m. Memory Care 1 p.m. Baking 2 p.m. Jim the Museum Guy 3 p.m. Coffee Social</p>	<p>11</p> <p>9:30 a.m. Chair Exercises 9:50 a.m. Hangman 10:30 a.m. Memory Care 2 p.m. Bingo! 3 p.m. Coffee Social</p>	<p>12</p> <p>9:30 a.m. Chair Exercises 9:50 a.m. Corn Hole 10:30 a.m. Memory Care 12:30 p.m. Canvas Painting 2 p.m. Steve Lang 3 p.m. Coffee Social</p> <p style="text-align: center;">Tu B'Shevat Begins</p>	<p>13</p> <p>9:30 a.m. Chair Exercises 10 a.m. Memory Care 11 a.m. Baking Club 1 p.m. Make Valentines 2 p.m. Bingo! 3 p.m. Coffee Social</p>	<p>14</p> <p>9:30 a.m. Chair Exercises 9:50 a.m. Puzzles 10:30 a.m. Memory Care 2 p.m. St. Paul's Evangelical 3 p.m. Valentine Social</p> <p style="text-align: center;">Valentine's Day</p>	<p style="text-align: right;">15</p> <p>*10 a.m. Bean Bag Toss *2 p.m. Cribbage</p>	
<p>16</p> <p>*10 a.m. Dominoes *2 p.m. Board Games</p>	<p>17</p> <p>9:30 a.m. Chair Exercises 9:50 a.m. Ball Toss 10:30 a.m. Memory Care 1p.m. Nails with Michele 1 p.m. Movie & Popcorn 3 p.m. Coffee Social</p> <p style="text-align: center;">Presidents' Day (U.S.)</p>	<p>18</p> <p>9:30 a.m. Chair Exercises 9:50 a.m. Broom Ball 10:30 a.m. Memory Care 2 p.m. Bingo! 3 p.m. Coffee Social</p>	<p>19</p> <p>9:30 a.m. Chair Exercises 10 a.m. FFA here to play Board & Card Games 10:30 a.m. Memory Care 2 p.m. Craig Blackstad Music 3 p.m. Coffee Social</p>	<p>20</p> <p>9:30 a.m. Chair Exercises 9:50 a.m. Parachute 10:30 a.m. Memory Care 1 p.m. Calvary Baptist 2 p.m. Bingo! 3 p.m. Coffee Social <i>Happy Birthday Bonnie!!</i></p>	<p>21</p> <p>9 a.m. Chair Exercises 10 a.m. SJV Catholic Mass 11 a.m. Memory Care 1 p.m. Baking Club 3 p.m. Coffee Social</p>	<p style="text-align: right;">22</p> <p>*10 a.m. Cribbage *2 p.m. SORRY!</p>	
<p>23</p> <p>*10 a.m. Puzzles *2 p.m. Broom Ball</p> <p><i>Happy Birthday Mary!!</i></p>	<p>24</p> <p>9:30 a.m. Chair Exercises 9:50 a.m. Card Games 10:30 a.m. Memory Care 2 p.m. February Birthday Celebration 3 p.m. Coffee Social</p>	<p>25</p> <p>9 a.m. St John's Sherburn 10 a.m. Chair Exercises 10:30 a.m. Memory Care 1 p.m. Memory Care 2 p.m. Bingo! 3 p.m. Coffee Social</p>	<p>26</p> <p>9:30 a.m. Chair Exercises 9:50 a.m. Corn Hole 10:30 a.m. Memory Care 1 p.m. Canvas Painting 3 p.m. Coffee Social</p>	<p>27</p> <p>9:30 a.m. Chair Exercises 9:50 a.m. Hangman 10:30 a.m. Memory Care 2 p.m. Bingo! 3 p.m. Coffee Social</p>	<p>28</p> <p>9:30 a.m. Chair Exercises 9:50 a.m. Ball Toss 10:30 a.m. Memory Care 2 p.m. Lee Kanten 3 p.m. <i>Ingleside Spirits!</i></p> <p style="text-align: center;">Ramadan Begins</p>		